

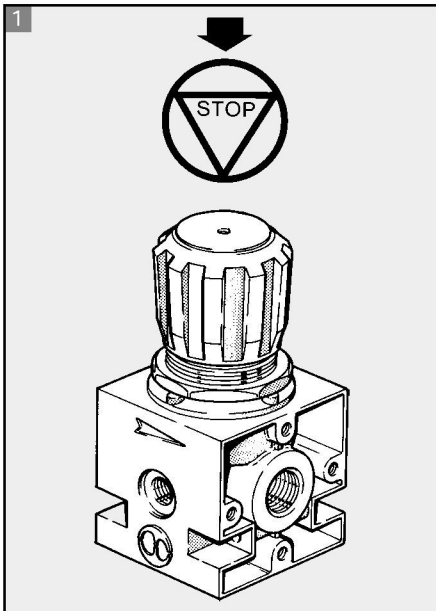
# Newdeal

Newdeal is the forerunner of all air treatment units by Metal Work.  
The entire range is top quality, heavy-duty and reliable. These units are designed for use at high pressures\* and in applications where the temperature and quality of the ambient area are critical.

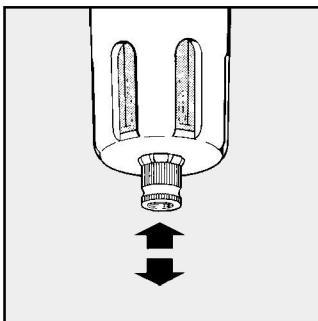
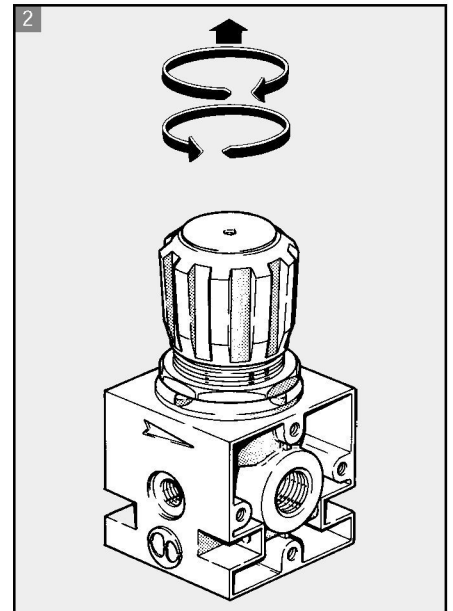
\*For further details, refer to the Specification for the item in question.



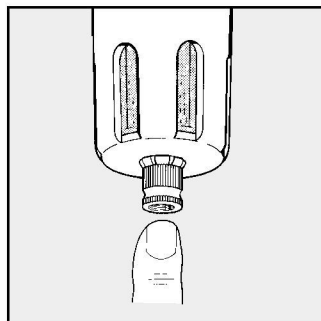
## GENERAL RULES - USE AND MAINTENANCE



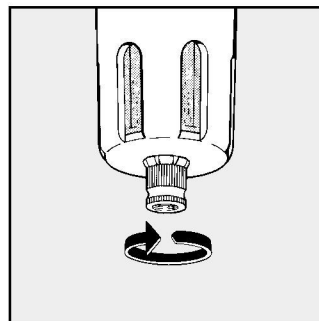
- 1 The knob can be locked so that the set pressure cannot be altered.
- 2 The air pressure must always be set upwards.



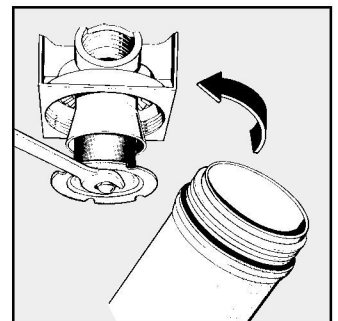
With the knob in the centre position, the drain is semi-automatic. The drain operates when the bowl is not pressurized and closes when it is.



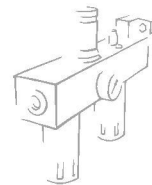
Press the button to drain condensate when the bowl is pressurized.



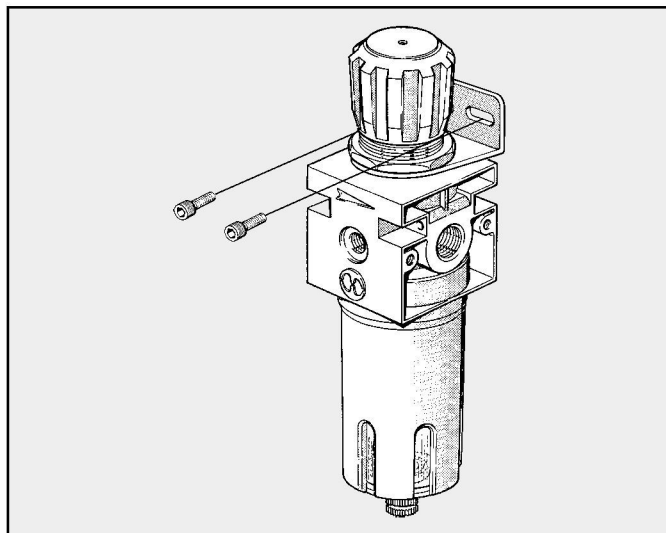
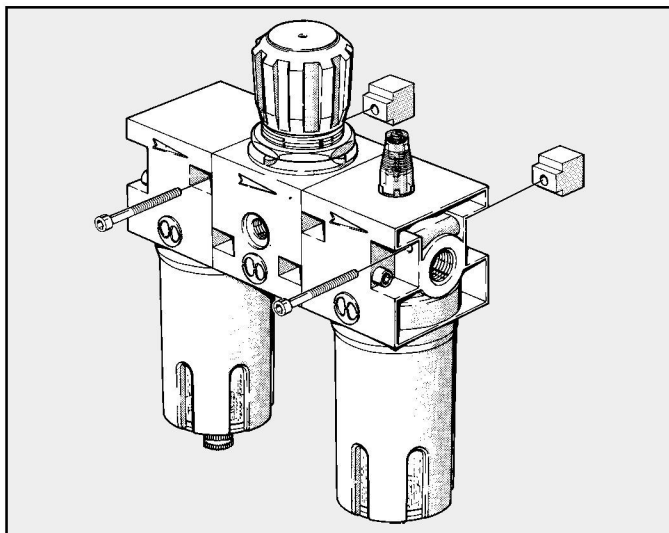
Turn the knob anticlockwise to close the valve with bowl pressurized or not pressurized.



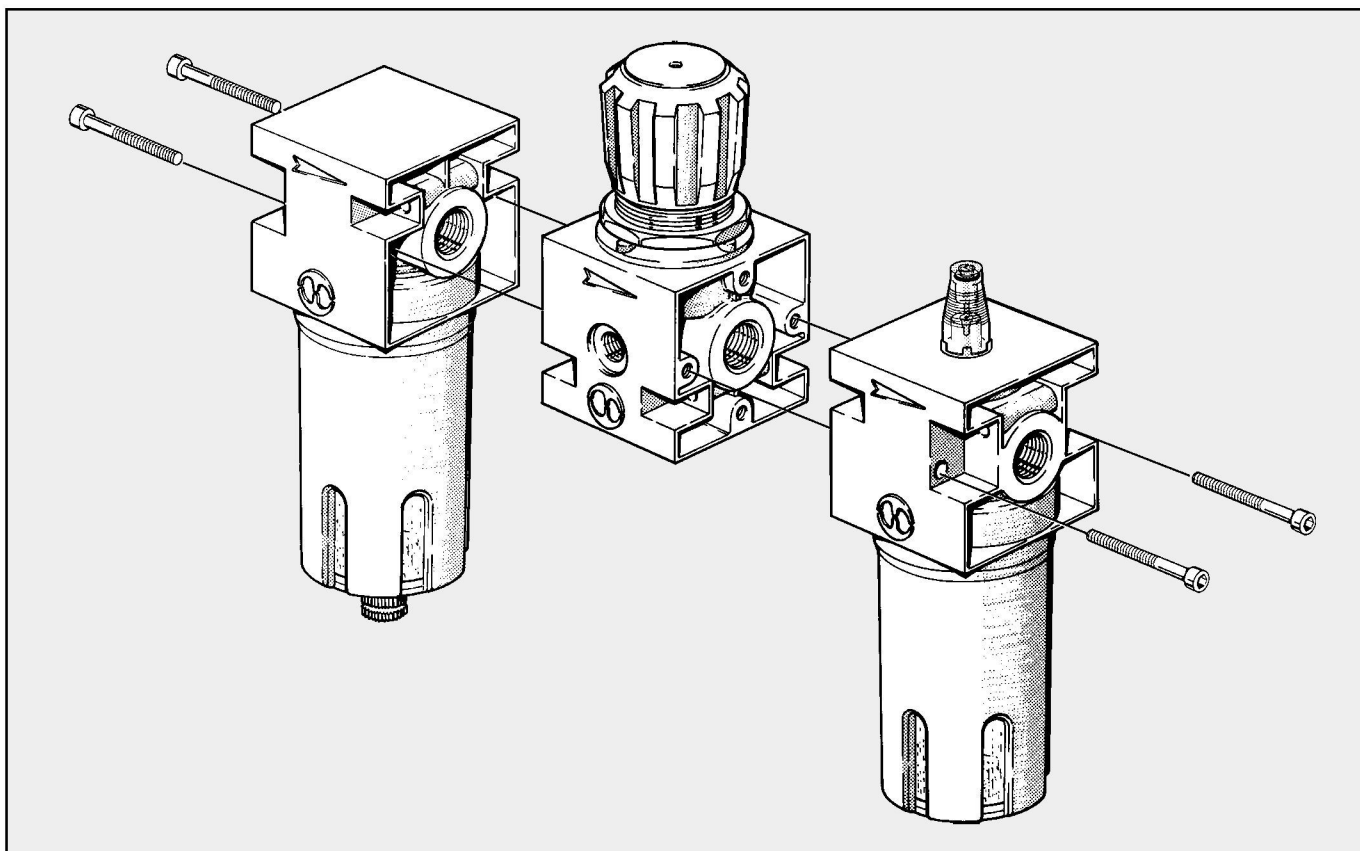
To clean or replace the filter element unscrew the screen of the centrifuge assembly. Use a no. 3 compass spanner to unscrew the bowl.



### WALL MOUNTING

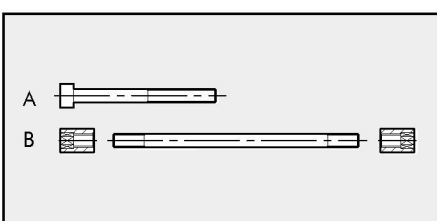


### ASSEMBLY DIAGRAM



3

### ASSEMBLY TIE RODS



Elements that can be assembled	1/4			3/8-1/2			3/4-1		
	Type	Code	Ref.	Type	Code	Ref.	Type	Code	Ref.
F/L+R/FR	A	9250001	CVA 1/4 4x40	A	9450001	CVA 1/2 5x55	A	9650001	CVA 1 6x70
V3V+R/FR	A	9250001	CVA 1/4 4x40	A	9450002	CVA 1/2 5x60			
V3V+F/L+R/FR	A	9250002	CVA 1/4 4x82	A	9450003	CVA 1/2 5x120			
F/L/D+F/L/D	B	9200901	F+L T 1/4	B	9400901	F+L T 3/8-1/2	B	9600901	F+L T 3/4-1

# Newdeal FILTER

Filter with different impurity filtration degrees.

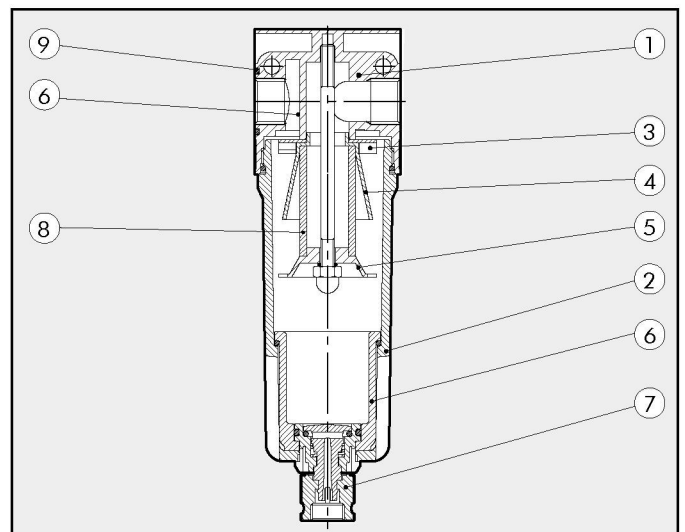
- Metal bowl with external viewing
- Semi-automatic and condensate drainage

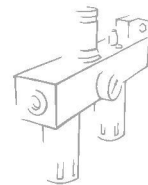


TECHNICAL DATA	FIL. ND 1/4"	FIL. ND 3/8"	FIL. ND 1/2"	FIL. ND 3/4"	FIL. ND 1"
Threaded port	1/4"	3/8"	1/2"	3/4"	1"
Degree of filtration		4µm 20µm 50µm		4µm; 20µm; 50µm	
Max. inlet pressure		1.8		1.8	
		18		18	
		261		261	
Flow rate at 6.3 bar (0.63 MPa-91 psi)	1300		3100		9100
ΔP 0.5 bar (0.05 MPa – 7 psi)	46		110		324
Flow rate at 6.3 bar (0.63 MPa-91 psi)	1720		4100		11000
ΔP 1 bar (0.1 MPa – 14 psi)	61		146		391
Fluid	Compressed air				
Max temperature at 1 MPa; 10 bar; 145 psi	50°				
	122°				
Weight	0.4		0.9		1.2
Wall fixing screws	M4x40		M4x55		M6x75
Mounting position	Vertical				
Drain	Manual - Semi-auto Automatic (SAC o RA)			Manual - Semi-auto Automatic (RA)	
Bowl capacity	10		45		170

## COMPONENTS

- ① Zamak body
- ② Aluminium bowl
- ③ Technopolymer centrifuge
- ④ Technopolymer baffle plug
- ⑤ Technopolymer screen
- ⑥ Clear technopolymer bowl
- ⑦ Drain (RMSA)
- ⑧ Sintered bronze filter cartridge
- ⑨ NBR gaskets

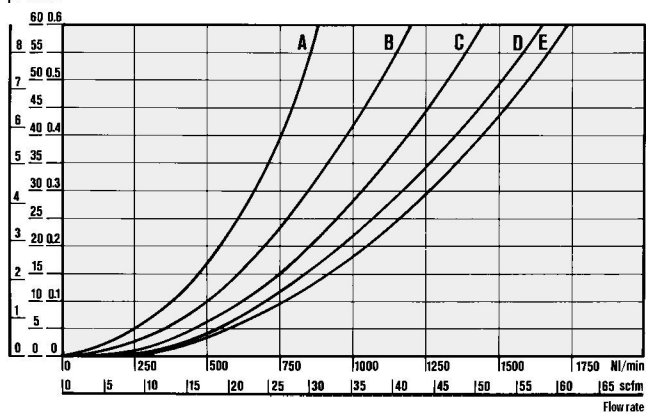




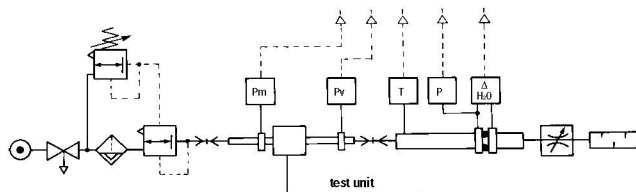
## FLOW CHARTS

### FIL 1/4

$\Delta P = (P_m - P_v)$   
psi KPa bar



**Department  
of Mechanics**  
Turin Polytechnic

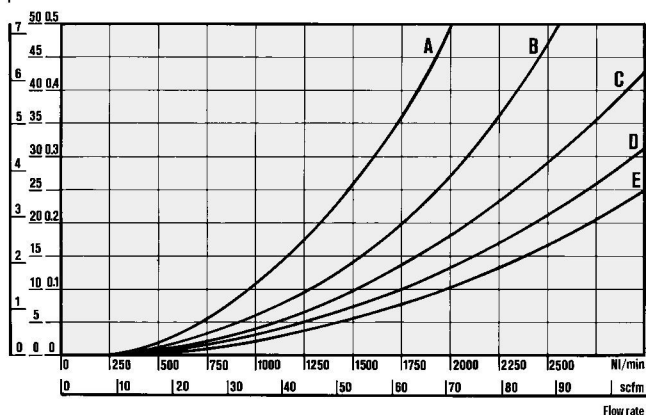


• Flow tests carried out at the Department of Mechanics, Turin Polytechnic, using the computerized test bench following CETOP RP50R recommendations (ISO DIS 6358-2-approved) with ISO 5167 diaphragm gauge.

- (A) = 2 bar - 0,2 MPa - 29 psi  
(B) = 4 bar - 0,4 MPa - 58 psi  
(C) = 6 bar - 0,6 MPa - 87 psi  
(D) = 8 bar - 0,8 MPa - 116 psi  
(E) = 10 bar - 1 MPa - 145 psi

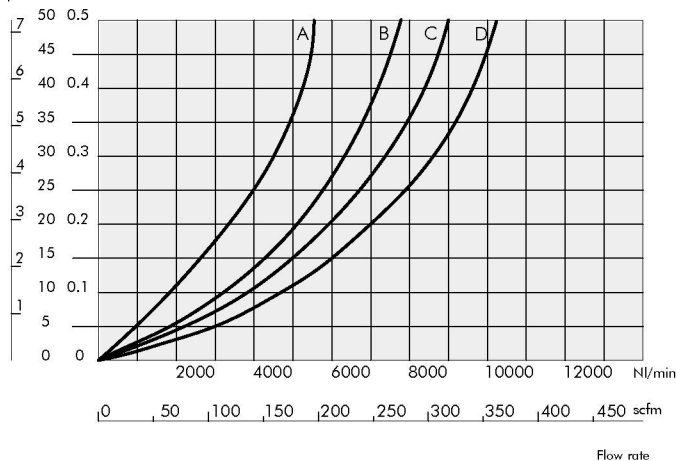
### FIL 3/8 - 1/2

$\Delta P = (P_m - P_v)$   
psi KPa bar



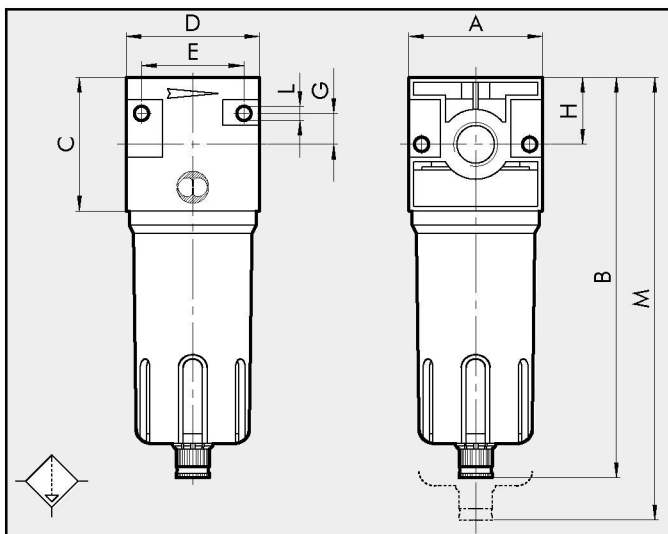
### FIL 3/4 - 1"

$\Delta P = (P_m - P_v)$   
psi KPa bar



3

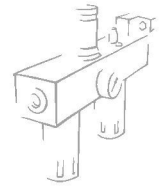
## DIMENSIONS



	G 1/4	G 3/8	G 1/2	G 3/4	G 1"
A	42	60	80		
B	142	180	235		
C	42	60	80		
D	42	60	80		
E	32	46	66		
G	10	14	22		
H	21	30	40		
L	M4 hole	M4 hole	M6 hole		
M	185	230	325		







# Newdeal REGULATOR

- Highly reliable, heavy-duty piston-operated regulator.
- Stability of the set pressure as the upstream pressure varies
  - Standard overpressure blowoff valve
  - Can be fixed to the wall using the holes in the sides of the body.

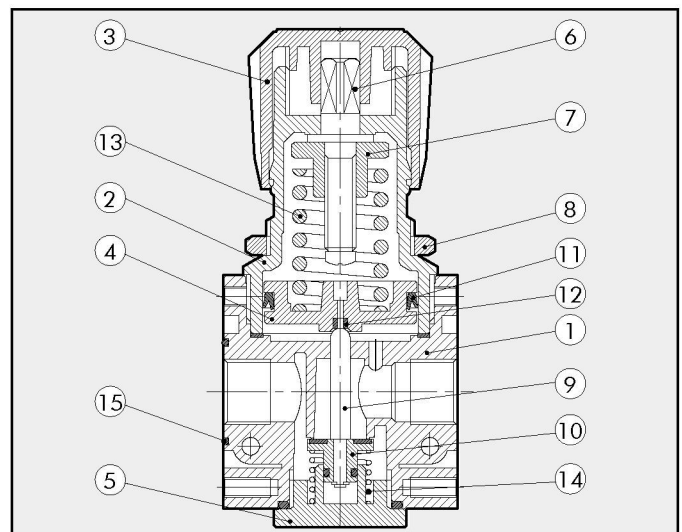


TECHNICAL DATA	REG. ND 1/4"	REG. ND 3/8"	REG. ND 1/2"	REG. ND 3/4"	REG. ND 1"
Threaded port	1/4"	3/8"	1/2"	3/4"	1"
Setting range	bar 0 to 2 - 0 to 4 - 0 to 8 - 0 to 12				
Max. inlet pressure	MPa 1.8				
	bar 18				
	psi 261				
Flow rate at 6.3 bar (0.63 MPa-91 psi)	NI/min 200	1100	2500	89	4500
ΔP 0.5 bar (0.05 MPa - 7 psi)	scfm 7	39	89	160	
Flow rate at 6.3 bar (0.63 MPa-91 psi)	NI/min 650	2500	4500		
ΔP 1 bar (0.1 MPa - 14 psi)	scfm 23	89	160		
Fluid	Filtered, lubricated or unlubricated compressed air. Lubrication, if used, must be continuous				
Max temperature at 1 MPa; 10 bar; 145 psi	°C 50°				
	°F 122°				
Weight	Kg 0.3	0.8	1.5		
Wall fixing screws	M4x40	M4x55	M6x75		
Mounting	In any position				
Gauge port	G 1/8"	G 1/8"	G 1/8"	1/4"	1/4"
Notes:	The regulator pressure must always be set upwards. For increased sensitivity, use a pressure regulator with a rated pressure as close as possible to the required value. Do not take off air from gauge ports.				

3

## COMPONENTS

- ① Zamak body
- ② Technopolymer bell
- ③ Technopolymer knob
- ④ Technopolymer piston rod
- ⑤ Technopolymer plug
- ⑥ OT58 brass adjusting screw
- ⑦ OT58 brass nut
- ⑧ Brass securing ring nut for 3/8"-1/2" and 3/4"-1" in technopolymer for 1/4"
- ⑨ OT brass rod
- ⑩ Valve with NBR vulcanized gasket
- ⑪ NBR lip seal
- ⑫ NBR relieving seal
- ⑬ Steel adjusting spring
- ⑭ Steel valve compression spring
- ⑮ NBR gaskets



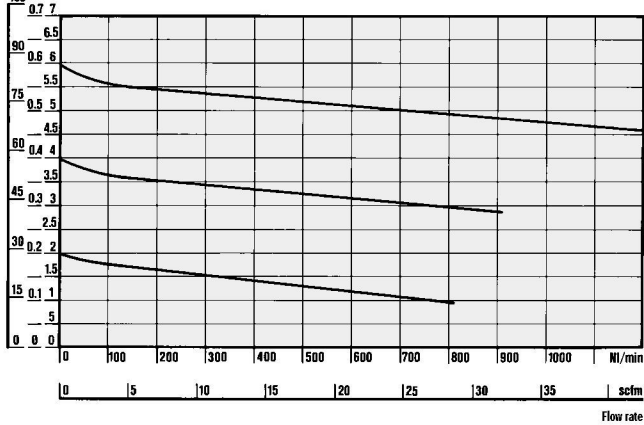
## FLOW CHARTS

### REG 1/4

$P_m = 0,7 \text{ MPa; } 7 \text{ bar; } 102 \text{ psi}$

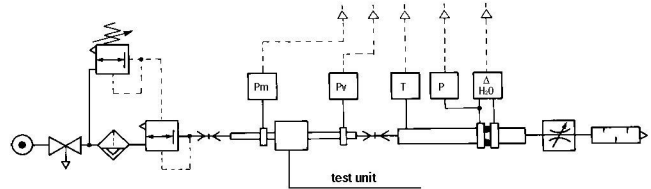
Inlet pressure

psi MPa bar



**Department of Mechanics**

Turin Polytechnic



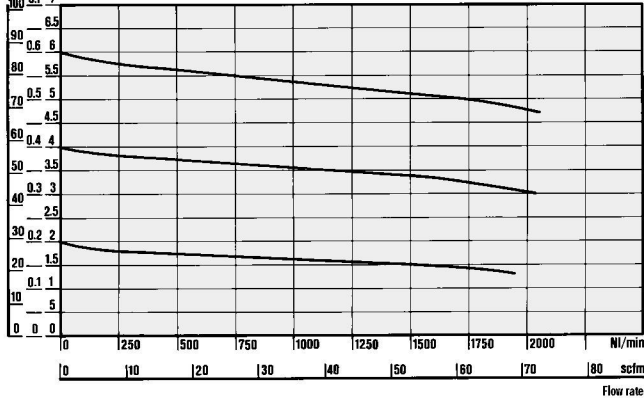
• Flow tests carried out at the Department of Mechanics, Turin Polytechnic, using the computerized test bench following CETOP RP50R recommendations (ISO DIS 6358-2-approved) with ISO 5167 diaphragm gauge.

### REG 3/8 - 1/2

$P_m = 0,7 \text{ MPa; } 7 \text{ bar; } 102 \text{ psi}$

Inlet pressure

psi MPa bar

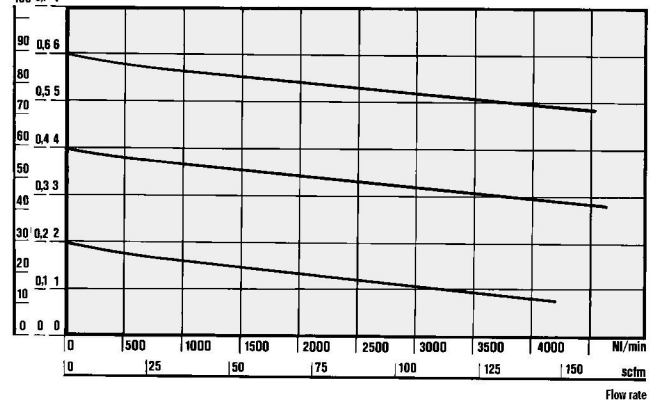


### REG 3/4 - 1"

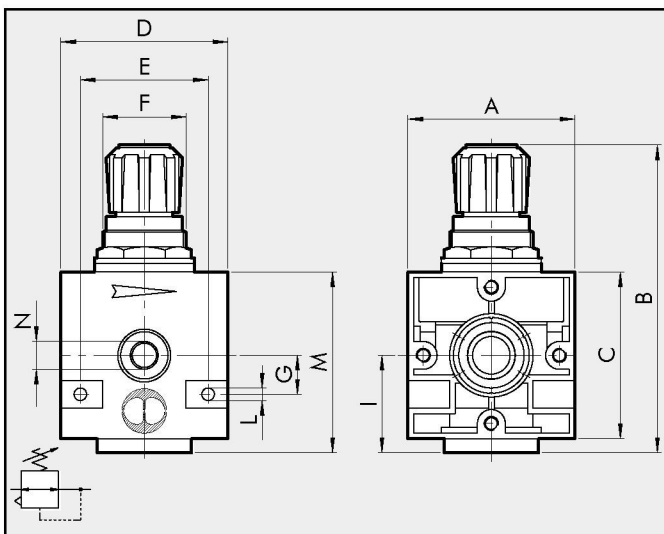
$P_m = 0,7 \text{ MPa; } 7 \text{ bar; } 102 \text{ psi}$

Inlet pressure

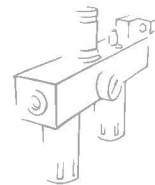
psi MPa bar



## DIMENSIONS



	G 1/4	G 3/8	G 1/2	G 3/4	G 1"
A	42	60	80		
B	94	130	184		
C	42	60	80		
D	42	60	80		
E	32	46	66		
F	30x1.5	38x2	55x2		
G	10	14	22		
I	25	35	47		
L	M4 hole	M4 hole	M6 hole		
M	49	70	94		
N	1/8	1/8	1/4		



### KEY TO CODES

REG ELEMENT	1/4 THREADED PORT	02 SETTING RANGE
REG	1/4	02
	3/8	04
	1/2	08
	3/4	012
	1	

### ORDERING CODES

Code	Description
1202001	REG 1/4 04
1202002	REG 1/4 08
1202003	REG 1/4 012
1202004	REG 1/4 02
1302001	REG 3/8 04
1302002	REG 3/8 08
1302003	REG 3/8 012
1402001	REG 1/2 04
1402002	REG 1/2 08
1402003	REG 1/2 012
1502001	REG 3/4 04
1502002	REG 3/4 08
1502003	REG 3/4 012
1602001	REG 1 04
1602002	REG 1 08
1602003	REG 1 012

### NOTES

Blank area for notes, consisting of 20 horizontal lines.

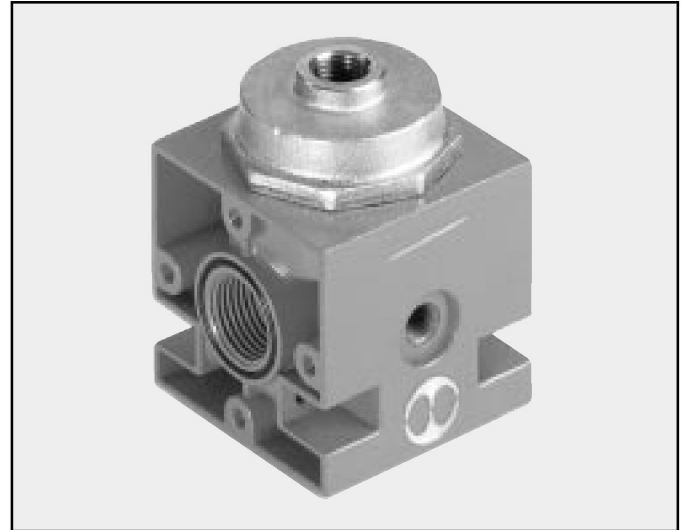
### NOTES

Blank area for notes, consisting of 20 horizontal lines.

# New deal PILOT-ASSISTED REGULATOR

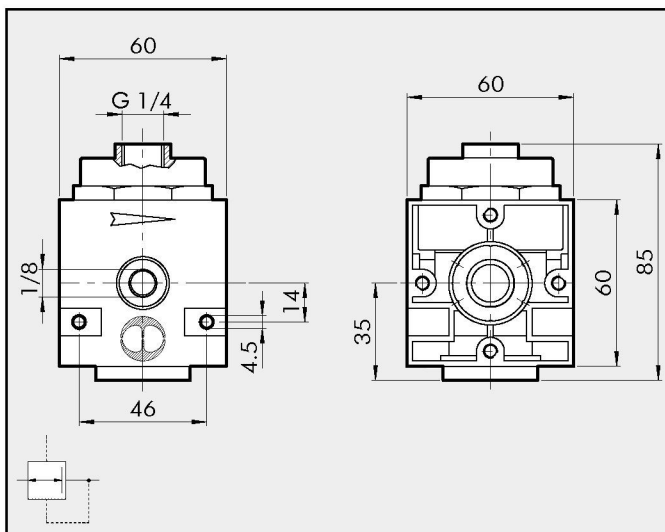
Remote pilot-assisted piston regulator for heavy-duty use.

- Stability of the set pressure as the upstream pressure varies;
- Can be fixed to the wall using the holes in the sides of the body.



TECHNICAL DATA		REG. PIL. 3/8" 1/2"
Threaded port		3/8"-1/2"
Setting range	bar	Depending on pilot
Max. inlet pressure	MPa	1.8
	bar	18
	psi	261
Flow rate at 6.3 bar (0.63 MPa ÷ 91 psi)	Nl/min	3500
ΔP 0,5 bar (0,05 MPa ÷ 7 psi)	scfm	124
Flow rate at 6.3 bar (0.63 MPa ÷ 91 psi)	Nl/min	4500
	scfm	160
Fluid		Filtered, lubricated or unlubricated compressed air. Lubrication, if used, must be continuous
Max temperature at 1 MPa; 10 bar; 145 psi	°C	50
	°F	122
Weight	Kg	0.8
Wall fixing screws		M4x55
Mounting		In any position
Gauge port		G 1/8"
Notes:		The regulator pressure must always be set upwards. Overpressure relieving from the pilot.

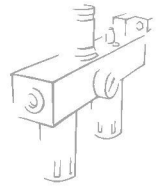
## DIMENSIONS



## ORDERING CODES

Code	Description
1302004	RP 3/8 PILOT-ASSISTED REGULATOR
1402004	RP 1/2 PILOT-ASSISTED REGULATOR

# Newdeal REGULATOR- REGULATOR WITH V3V 3/4" and 1"



Piloted regulator with integrated function, manual, electropneumatic or pneumatic stop valve as required. It performs two functions in the space usually occupied by a single module, which ensures a high flow rate at all P values including low ones. Extremely quick responses in both discharge and feed. The integrated pilot regulator is available with controlled leak.

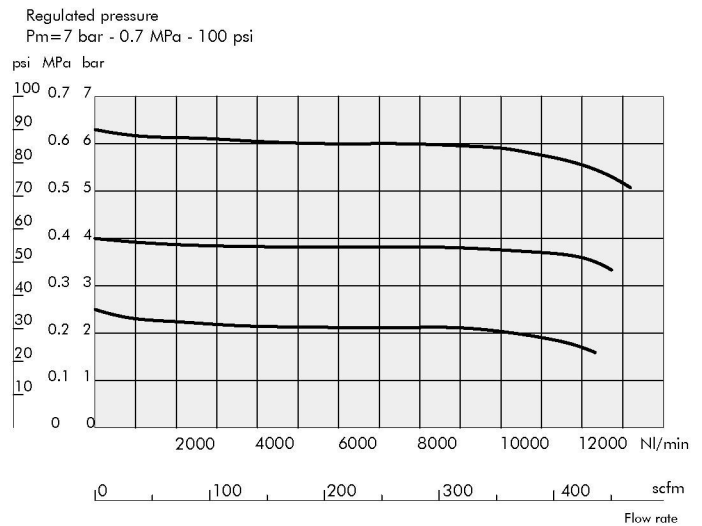


TECHNICAL DATA		3/4"	1"
Threaded port	G	3/4"	1"
Setting range	bar	0÷2 - 0÷4 - 0÷8 - 0÷12	
*Max. inlet pressure	MPa	1.3	
	bar	13	
	psi	188	
Flow rate at 6.3 bar (0.63 MPa-91 psi)	Nl/min	12000	
ΔP 0.5 bar (0.05 MPa÷7 psi)	scfm	423	
Flow rate at 6.3 bar (0.63 MPa-91 psi)	Nl/min	13000	
ΔP 1 bar (0.1 MPa÷14 psi)	scfm	460	
Fluid		Lubricated or unlubricated filtered air. If lubrication is used, it must be continuous.	
Drain flow rate at 6 bar (0.6 MPa÷87 psi)	Nl/min	1800	
	scfm	64	
Temperature range (1 MPa÷145psi)	°C	-10°÷+50°C	
	°F	14°F÷122°F	
Weight	Kg	1.7	
Wall fixing screws		M6x75	
Position of montage		In any position	

\*Version Reg+V3V Cnomo (1 Mpa - 10bar - 145psi)

Version Reg with solenoid (0.8 Mpa - 8 bar - 116 psi)

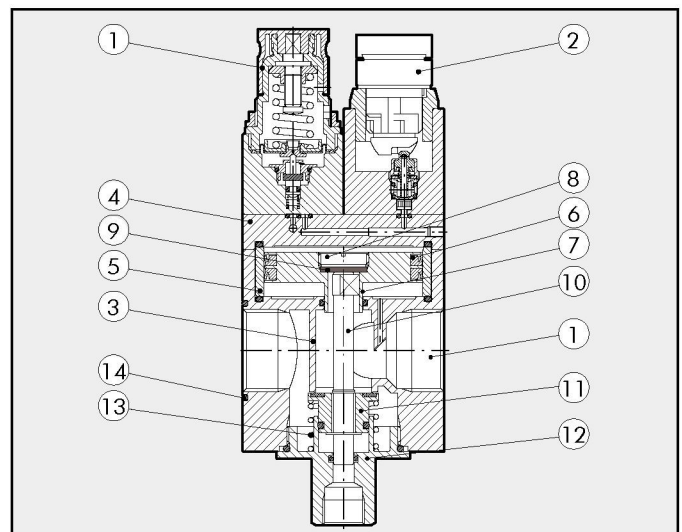
## FLOW CHARTS



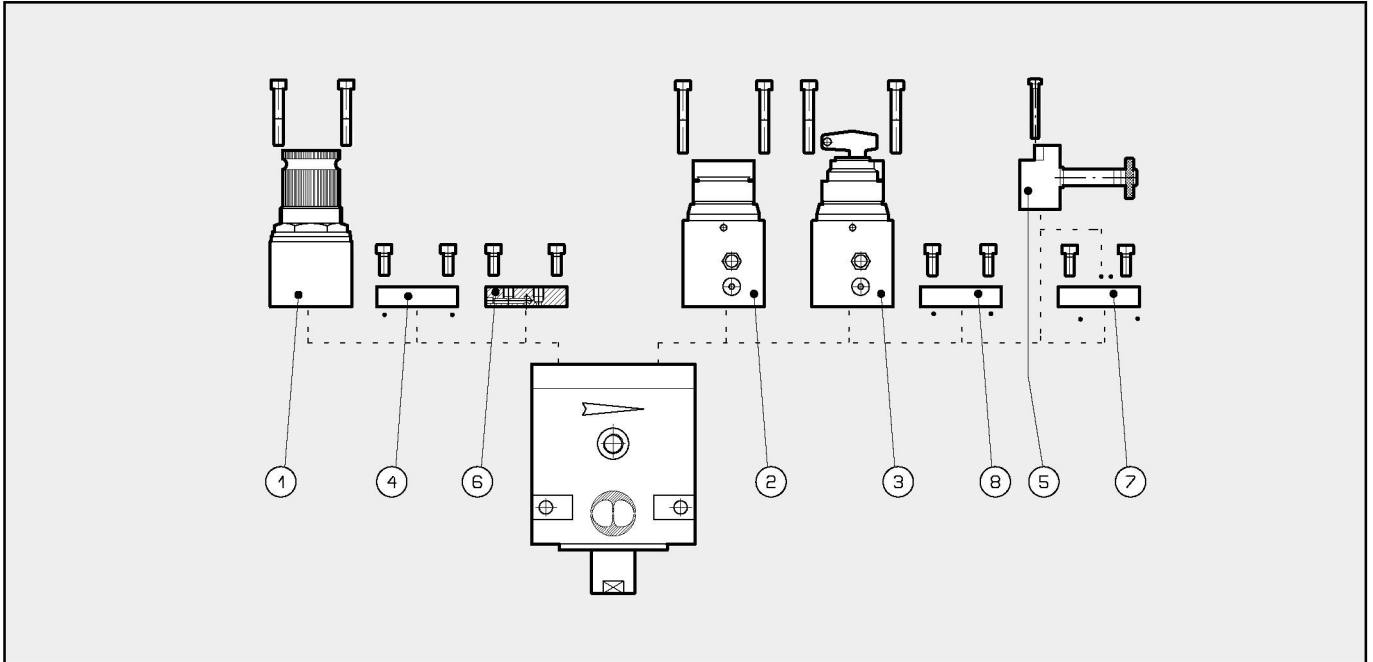
3

## COMPONENTS

- ① Pilot Reg. sub-assembly
- ② Manual V3V control sub-assembly
- ③ Aluminium regulator body
- ④ Aluminium upper plate
- ⑤ Aluminium spacer
- ⑥ NBR lip seal
- ⑦ Aluminium Ø 63 piston rod
- ⑧ Cap for OT 58 brass plain gasket
- ⑨ NBR plain gasket
- ⑩ OT 58 brass rod
- ⑪ OT 58 brass valve
- ⑫ Aluminium lower cap
- ⑬ Steel valve spring
- ⑭ NBR gaskets



## ASSEMBLY OPTIONS



This modular system makes it possible to make the following combinations:

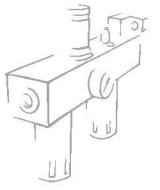
- A) Regulator with pilot regulator ① or remote control ⑥, the end plate is mounted on the right-hand side ⑧.
- B) V3V with manual lever-operated control ② or key control ③ or solenoid CNOMO ⑤, the end plate is mounted on the left-hand side ④.
- C) Regulator + V3V is the result of the free combination of the versions specified above.

### TECHNICAL DATA

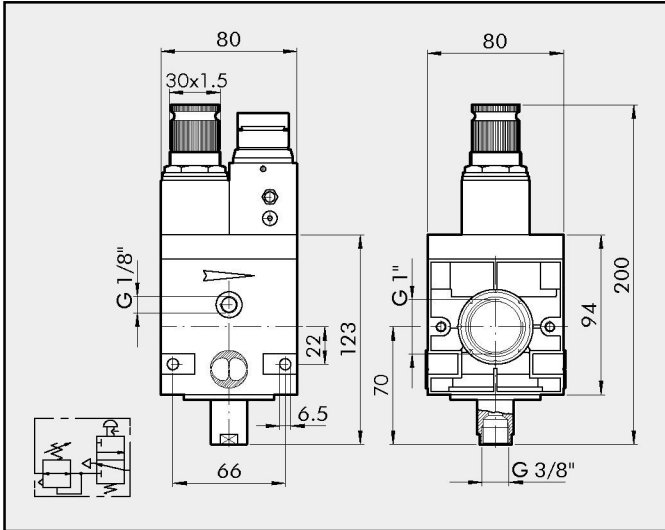
Code	Description
① 9640501-02-03-04	Pilot regulator kit
② 9640401	V3V manual lever-operated control kit
③ 9640301	V3V manual key-operated control kit
④ 9640101	End plate kit for V3V
⑤ 9453922	V3V ELPN CNOMO bistable control kit
⑤ 9453920	V3V ELPN CNOMO monostable control kit
⑥ 9640001	Remote control plate kit
⑦ 9640201	Plate kit to mount Cnomo rotated by 180°
⑧ 9640101	End plate kit for piloted regulator

### NOTES

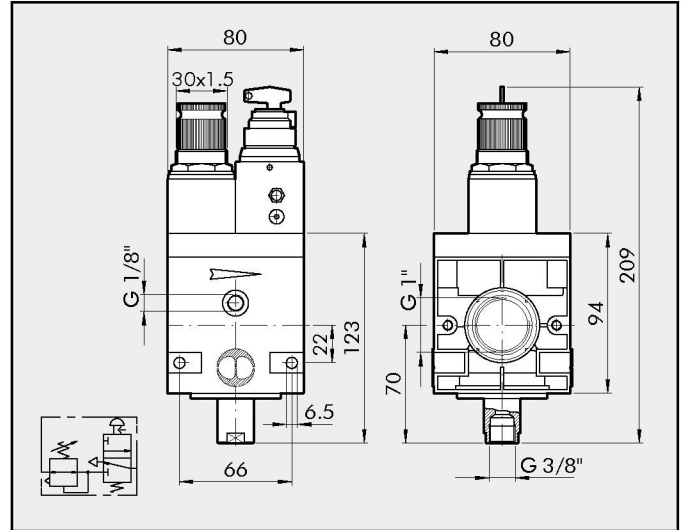




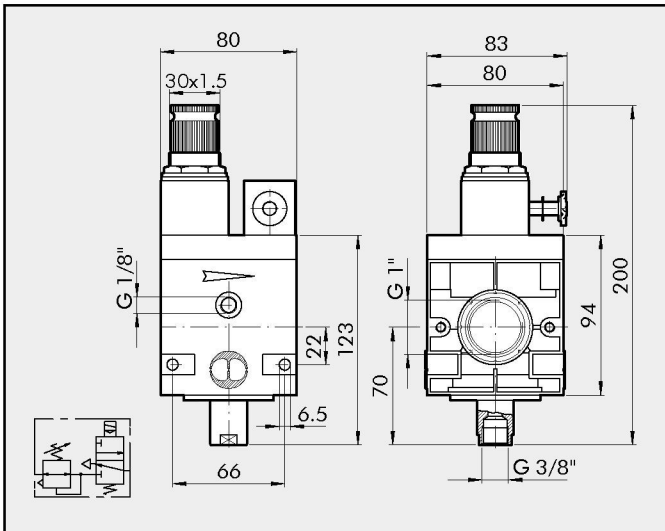
REG P + V3V MANUAL



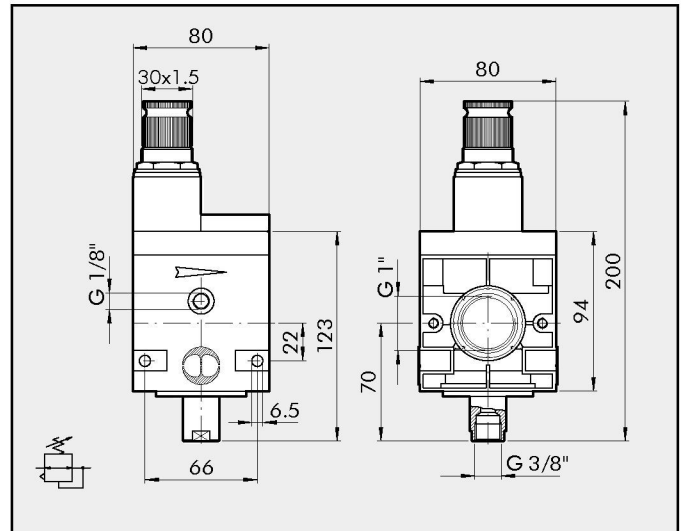
REG P + V3V KEY



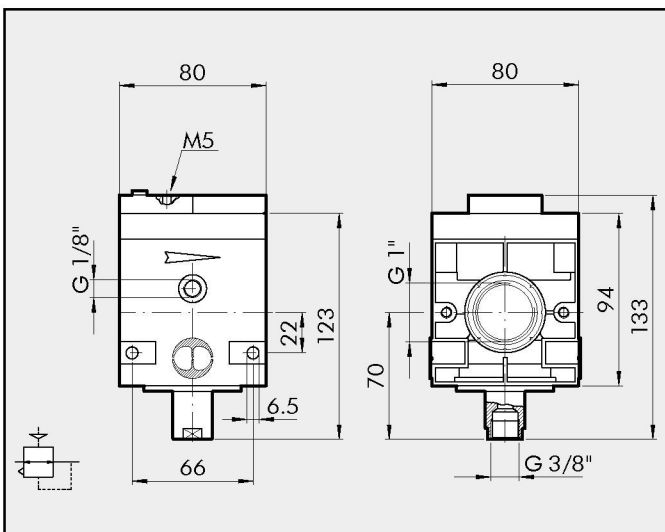
REG P + V3V ELPN CNOMO



REG P



REG P 00



### KEY TO CODES

RV3V	1	02	ELPN	
ELEMENT	THREADED PORT	SETTING RANGE	ELPN V3V CONTROL	RV3V: Regulator with built-in shut-off valve. ELPN: CNOMO solenoid REGP: Piloted regulator
RV3V REGP	1" 3/4"	00 02 04 08 012	ELPN KEY MANUAL	

### ORDERING CODES

Code	Description	Code	Description
1519001	REGP 3/4 00	1619001	REGP 1 00
1518001	REGP 3/4 02	1618001	REGP 1 02
1518002	REGP 3/4 04	1618002	REGP 1 04
1518003	REGP 3/4 08	1618003	REGP 1 08
1518004	REGP 3/4 012	1618004	REGP 1 012
1517001	RV3V 3/4 02 ELPN	1617001	RV3V 1 02 ELPN
1517002	RV3V 3/4 04 ELPN	1617002	RV3V 1 04 ELPN
1517003	RV3V 3/4 08 ELPN	1617003	RV3V 1 08 ELPN
1516101	RV3V 3/4 02 KEY	1616101	RV3V 1 02 KEY
1516102	RV3V 3/4 04 KEY	1616102	RV3V 1 04 KEY
1516103	RV3V 3/4 08 KEY	1616103	RV3V 1 08 KEY
1516104	RV3V 3/4 012 KEY	1616104	RV3V 1 012 KEY
1516001	RV3V 3/4 02 MANUAL	1616001	RV3V 1 02 MANUAL
1516002	RV3V 3/4 04 MANUAL	1616002	RV3V 1 04 MANUAL
1516003	RV3V 3/4 08 MANUAL	1616003	RV3V 1 08 MANUAL
1516004	RV3V 3/4 012 MANUAL	1616004	RV3V 1 012 MANUAL

### NOTES

---



---



---



---



---



---



---



---



---



---



---



---



---



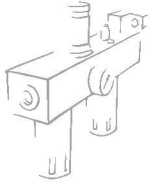
---



---



---



# NEWTRONIC **Newdeal** ELECTRONIC CONTROL REGULATOR

The Newtronic is an electronically-controlled pressure regulator equipped with an 8-bit microcontroller. The control signal can be analogic, digital via RS232 or digital from the keyboard. It is converted into a proportional pressure signal by means of high-rate solenoid valves. The regulator can be used alone within the indicated flow values, or in combination with a Newdeal 1"-3/4" pilot-assisted pressure regulator (power stage).

The advantages are:

- Integration with analogic or digital control systems (PC, PLC, etc.)
- Extremely fast response times
- Excellent repeatability and reliability
- Low power absorption

Skilltronic comes in two basic versions:

- Version A, with analogic control via the mains or RS232 serial line.
- Version D, with control via RS232 serial line or keyboard or mains, with display of the set and regulated pressures.

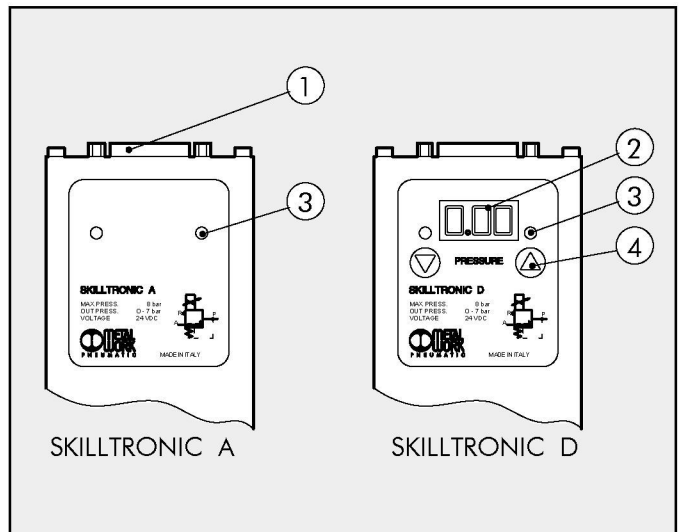


DATI TECNICI		NEWTRONIC A e D 3/4"-1"
Setting range	MPa	0.03 ÷ 0.7
	bar	0.3 ÷ 7
	psi	4 ÷ 100
Control pressure	MPa	0.1 ÷ 0.8
	bar	1 ÷ 8
	psi	15 ÷ 115
Temperature range	°C	-10°C ÷ +50°C
	°F	14°F ÷ 122°F
Degree of protection		IP65
Weight	Kg	2.5
Fluid		20 µm filtered air, de-humidified and unlubricated.
Supply voltage	V	24VDC
Max. absorbed power	W	2
Control		0 ÷ 5V / 0 ÷ 10 V / RS 232
Flow rate at 6.3 bar (0.63 MPa, 91 psi)	NI/min	12000
ΔP 0.5 bar (0.05 MPa, 7 psi)	scfm	426

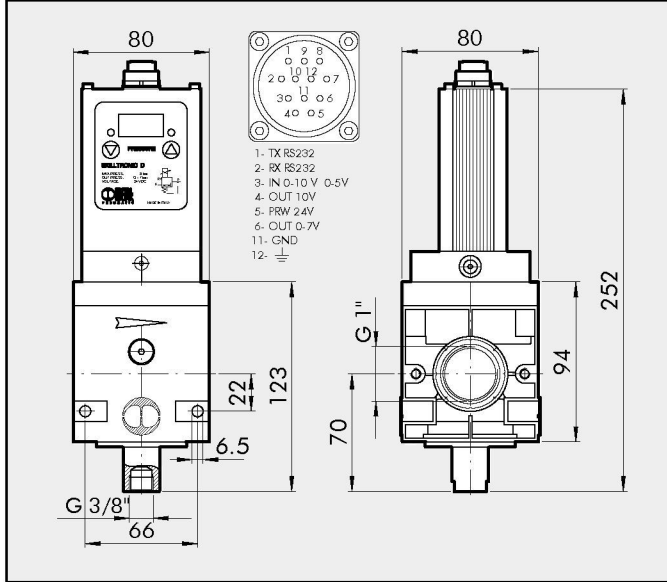
3

## COMPONENTS

- ① Connection for power supply and serial line
- ② 3-digit digital display
- ③ Led
- ④ Keys for equipment configuration and pressure setting.



**DIMENSIONS**

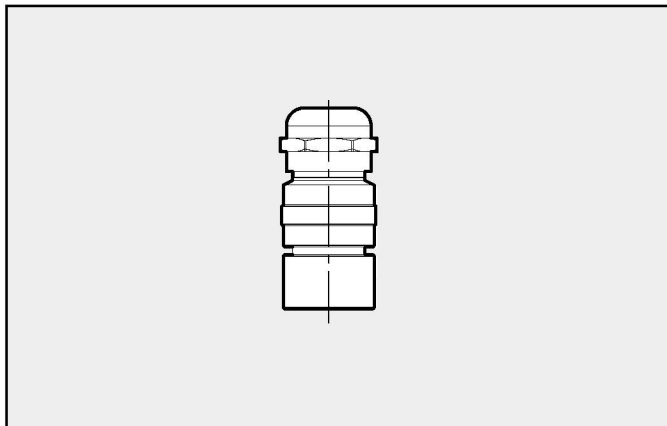


**ORDERING CODES**

Code	Description
1520001	NEWTRONIC 3/4 A
1520002	NEWTRONIC 3/4 D
1620001	NEWTRONIC 1 A
1620002	NEWTRONIC 1 D

**ACCESSORIES**

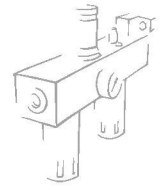
**CONNECTOR IP65**



Code	Description
W0214100200	CONNECTOR IP 60 90° ELBOW
W0214100000	CONNECTOR IP 65 STRAIGHT

**NOTES**

Blank area for notes.



# Newdeal FILTER REGULATOR

Highly reliable piston-operated filter regulator.

- Stability of the set pressure as the upstream pressure varies
- Standard overpressure blow-off valve
- Can be fixed to the wall using the holes in the sides of the body
- Metal bowl with external viewing
- Manual/semi-auto or automatic condensate drainage

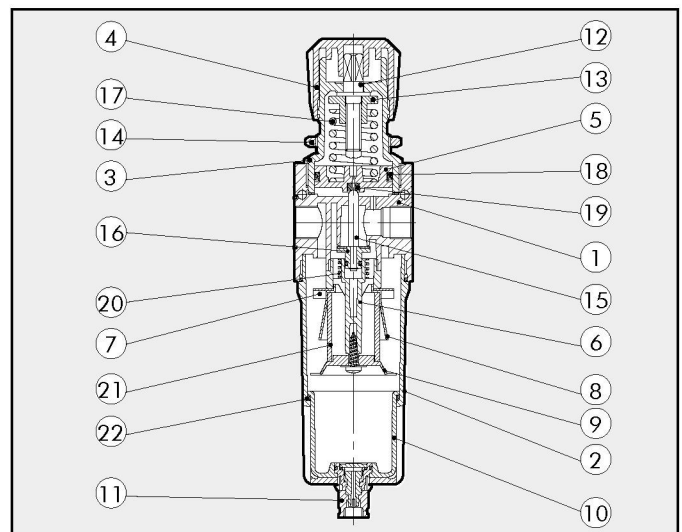


TECHNICAL DATA	FR ND 1/4	FR ND 3/8"	FR ND 1/2"
Threaded port	1/4"	3/8"	1/2"
Setting range	bar 0 to 2 - 0 to 4 - 0 to 8 - 0 to 12		
Degree of filtration	4µm 20µm 50µm		
Max. inlet pressure	MPa 1.8		
	bar 18		
	psi 261		
Flow rate at 6.3 bar (0.63 MPa±91 psi)	Nl/min 260	1000	
ΔP 0,5 bar (0,05 MPa±7 psi)	scfm 9.2	35.5	
Flow rate at 6.3 bar (0.63 MPa±91 psi)	Nl/min 700	2500	
ΔP 1 bar (0.1 MPa±14 psi)	scfm 25	88.5	
Fluid	Compressed air		
Max temperature at 1 MPa; 10 bar; 145 psi	°C 50°		
	°F 122°		
Weight	Kg 0.5	1	
Wall fixing screws	M4x40	M4x55	
Mounting position	Vertical		
Gauge port	G 1/8"	G 1/8"	
Bowl capacity	cm <sup>3</sup> 10	45	
Condensate drain	Manual - Semi-automatic - Automatic		
Notes:	The regulator pressure must always be set upwards.		

3

## COMPONENTS

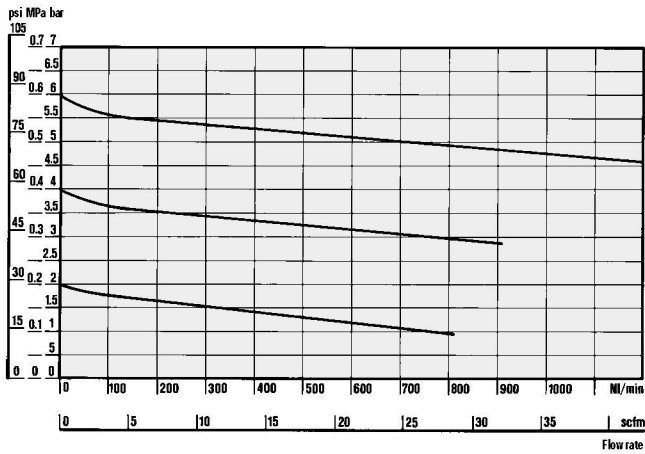
- |  |                                    |
|--|------------------------------------|
| ① Zamak body   | ⑩ Valve with NBR vulcanized gasket |
| ② Aluminium bowl   | ⑪ Steel adjusting spring           |
| ③ Technopolymer bell   | ⑫ NBR lip seal                     |
| ④ Technopolymer knob   | ⑬ NBR relieving seal               |
| ⑤ Technopolymer piston rod   | ⑭ Steel valve compression spring   |
| ⑥ Technopolymer plug   | ⑮ Sintered bronze filter cartridge |
| ⑦ Technopolymer centrifuge   | ⑯ NBR gaskets                      |
| ⑧ Technopolymer baffle plug  |                                    |
| ⑨ Technopolymer screen   |                                    |
| ⑩ Technopolymer bowl   |                                    |
| ⑪ Drain (RMSA)   |                                    |
| ⑫ OT 58 adjustind screw  |                                    |
| ⑬ OT 58 brass nut  |                                    |
| ⑭ OT 58 brass securing ring nut for 3/8-1/2 e 3/4-1 in technopolymer for 1/4 |                                    |
| ⑮ OT58 brass rod   |                                    |



## FLOW CHARTS

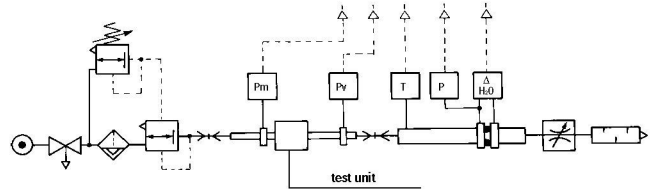
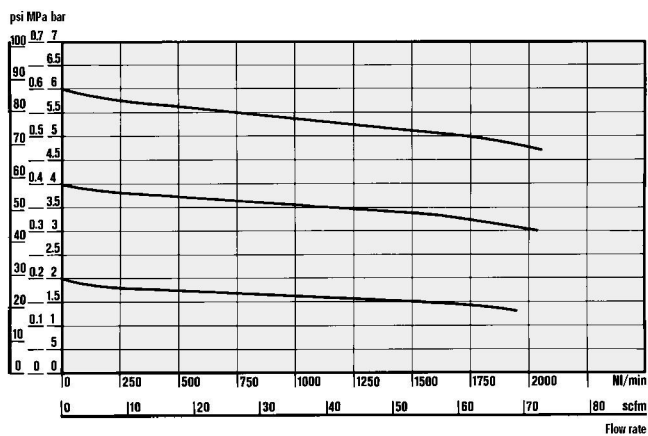
### FR 1/4

$P_{in} = 0,7 \text{ MPa}; 7 \text{ bar}; 102 \text{ psi}$   
Inlet pressure



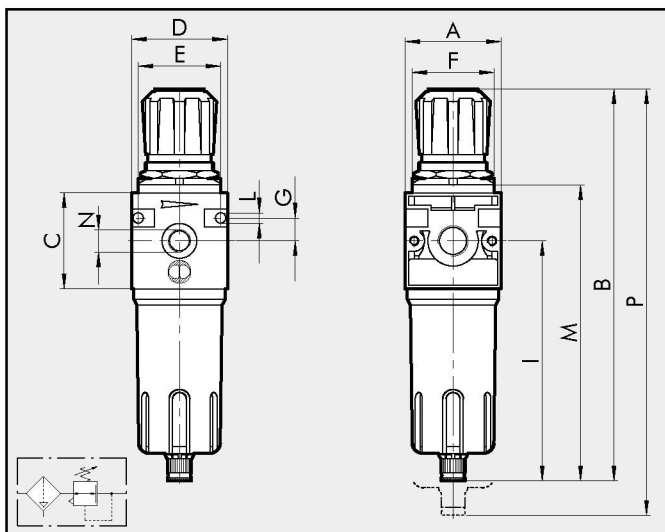
### FR 3/8 - 1/2

$P_{in} = 0,7 \text{ MPa}; 7 \text{ bar}; 102 \text{ psi}$   
Inlet pressure

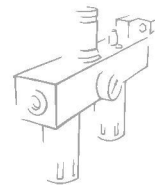


• Flow tests carried out at the Department of Mechanics, Turin Polytechnic, using the computerized test bench following CETOP RP50R recommendations (ISO DIS 6358-2-approved) with ISO 5167 diaphragm gauge.

## DIMENSIONS



	G 1/4	G 3/8	G 1/2
A	42	60	
B	190	245	
C	42	60	
D	42	60	
E	36	52	
F	30x1.5	38x2	
G	10	14	
I	121	150	
L	M4 hole	M4 hole	
M	145	185	
N	1/8	1/8	
P	233	295	



## KEY TO CODES

FR	1/4	4µm	02	RMSA	RMSA: Manual/semi-auto drain. SAC: Automatic drain. Operates by depression - requires variable air take-offs.
ELEMENT	THREADED PORT	DEGREE OF FILTRATION	SETTING RANGE	CONDENSATE DRAIN	
FR	1/4 3/8 1/2	4µm 20µm 50µm	02 04 08 012	RMSA SAC	

## ORDERING CODES

Code	Description
1225029	FR 1/4 4 08 RMSA TMV
1225509	FR 1/4 4 08 SAC TMV
1225053	FR 1/4 4 012 RMSA TMV
1225513	FR 1/4 4 012 SAC TMV
1225030	FR 1/4 20 08 RMSA TMV
1225510	FR 1/4 20 08 SAC TMV
1225054	FR 1/4 20 012 RMSA TMV
1225514	FR 1/4 20 012 SAC TMV
1225032	FR 1/4 50 08 RMSA TMV
1225511	FR 1/4 50 08 SAC TMV
1225056	FR 1/4 50 012 RMSA TMV
1225516	FR 1/4 50 012 SAC TMV
1325029	FR 3/8 4 08 RMSA TMV
1325509	FR 3/8 4 08 SAC TMV
1325053	FR 3/8 4 012 RMSA TMV
1325513	FR 3/8 4 012 SAC TMV
1325030	FR 3/8 20 08 RMSA TMV
1325510	FR 3/8 20 08 SAC TMV
1325054	FR 3/8 20 012 RMSA TMV
1325514	FR 3/8 20 012 SAC TMV
1325032	FR 3/8 50 08 RMSA TMV
1325512	FR 3/8 50 08 SAC TMV
1325056	FR 3/8 50 012 RMSA TMV
1325516	FR 3/8 50 012 SAC TMV
1425029	FR 1/2 4 08 RMSA TMV
1425509	FR 1/2 4 08 SAC TMV
1425053	FR 1/2 4 012 RMSA TMV
1425513	FR 1/2 4 012 SAC TMV
1425030	FR 1/2 20 08 RMSA TMV
1425510	FR 1/2 20 08 SAC TMV
1425054	FR 1/2 20 012 RMSA TMV
1425514	FR 1/2 20 012 SAC TMV
1425032	FR 1/2 50 08 RMSA TMV
1425512	FR 1/2 50 08 SAC TMV
1425056	FR 1/2 50 012 RMSA TMV
1425516	FR 1/2 50 012 SAC TMV

## NOTES



# Newdeal LUBRICATOR

Lubricator with high lubrication stability.

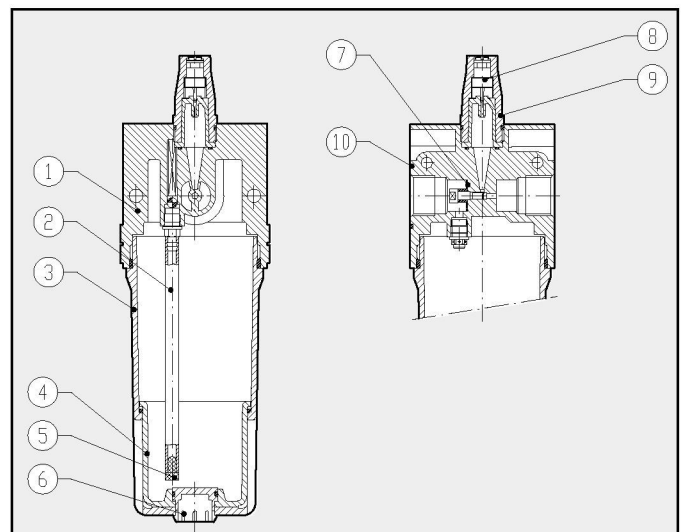
- Quantity of lubricant proportioned to air flow
- Micrometric regulation of lubricant flow
- Activates at low flow rates
- All-round oil level viewing

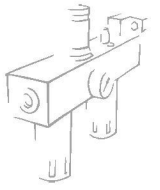


TECHNICAL DATA	LUB ND 1/4"	LUB ND 3/8"	LUB ND 1/2"	LUB ND 3/4"	LUB ND 1"
Threaded port	1/4"	3/8"	1/2"	3/4"	1"
Type of lubrication	mist				
Bowl capacity	50		150		380
Max. inlet pressure	1.8 MPa - 18 bar - 261 psi				
Flow rate at 6.3 bar (0.63 MPa ± 91 psi)	NI/min	700	3000		12800
ΔP 0.5 bar (0.05 MPa ± 7 psi)	scfm	25	107		452
Flow rate at 6.3 bar (0.63 MPa ± 91 psi)	NI/min	1100	4300		16000
ΔP 1 bar (0.1 MPa ± 14 psi)	scfm	39	153		565
Fluid	Filtered compressed air				
Max temperature at 1 MPa; 10 bar; 145 psi	50°C - 122°F				
Weight	Kg	0.4	0.9		1.3
Wall fixing screws	M4x40		M4x55		M6x75
Mounting position	Vertical				
Notes:	<ul style="list-style-type: none"> <li>• Use the screw provided to set the drip rate to drop every 300-600 ML.</li> <li>• Fit the lubricator as close as possible to the point of use</li> <li>• Fill the bowl with oil before pressurizing the system</li> <li>• Do not use cleaning oil, brake fluid or solvents in general</li> <li>• Recommended lubricants: ISO and UNI FD22 - E.g. Energol HLP 22 (BP) - Spinesso 22 (Esso) - Mobil DTE 22 (Mobil) - Tellus Oil 22 (Shell)</li> <li>• Automatic filling lubricator and minimum level lubricator.</li> </ul>				
On request:					

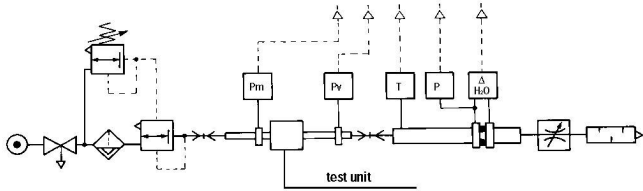
## COMPONENTS:

- ① Zamak body
- ② Rilsan oil suction pipe
- ③ Aluminium bowl
- ④ Clear technopolymer bowl
- ⑤ Filter
- ⑥ Technopolymer plug
- ⑦ Venturi NBR diaphragm
- ⑧ OT 58 brass oil flow regulation needle
- ⑨ Clear technopolymer cover
- ⑩ NBR gaskets





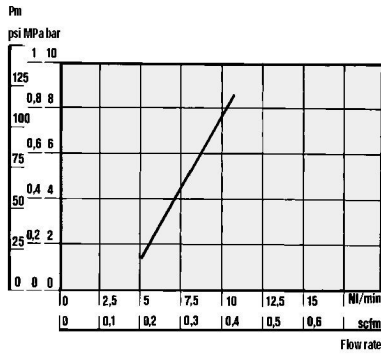
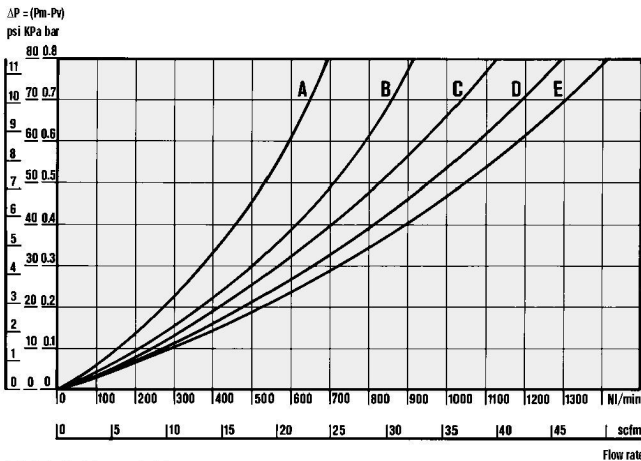
FLOW CHARTS



• Flow tests carried out at the Department of Mechanics, Turin Polytechnic, using the computerized test bench following CETOP RP50R recommendations (ISO DIS 6358-2-approved) with ISO 5167 diaphragm gauge.

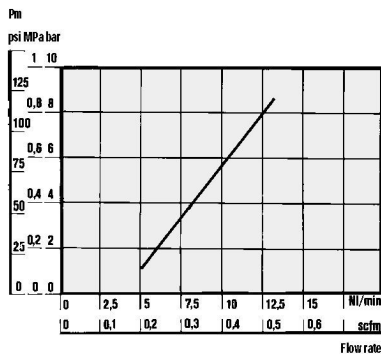
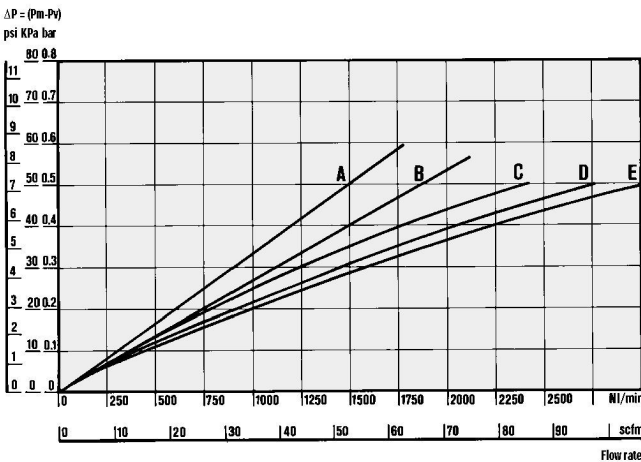
- (A) = 2 bar - 0,2 MPa - 29 psi
- (B) = 4 bar - 0,4 MPa - 58 psi
- (C) = 6 bar - 0,6 MPa - 87 psi
- (D) = 8 bar - 0,8 MPa - 116 psi
- (E) = 10 bar - 1 MPa - 145 psi

LUB 1/4



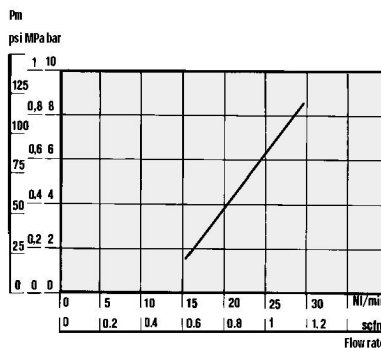
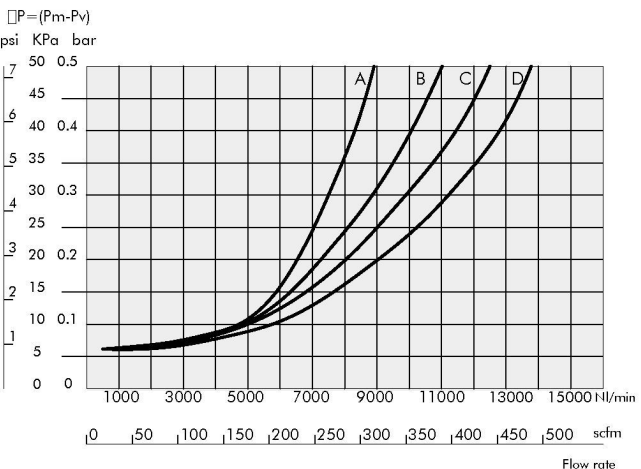
• **MINIMUM ACTIVATION FLOW CHARTS**  
The minimum activation flow charts were carried out in compliance with ISO/DP 6301/2

LUB 3/8 - 1/2



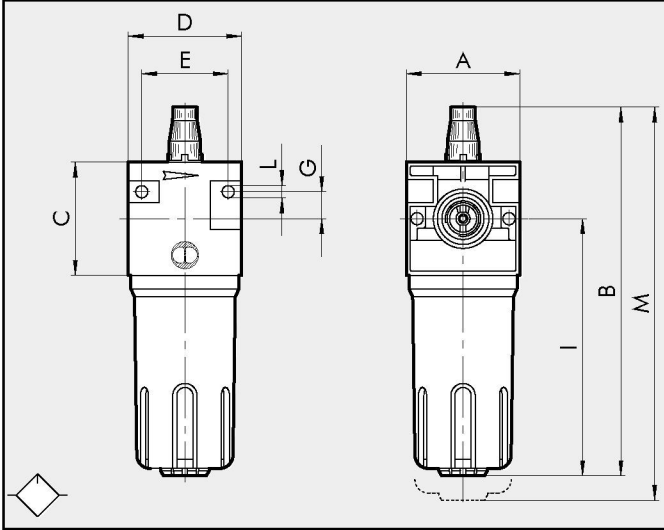
• **MINIMUM ACTIVATION FLOW CHARTS**  
The minimum activation flow charts were carried out in compliance with ISO/DP 6301/2

LUB 3/4 - 1"



• **MINIMUM ACTIVATION FLOW CHARTS**  
The minimum activation flow charts were carried out in compliance with ISO/DP 6301/2

**DIMENSIONS**

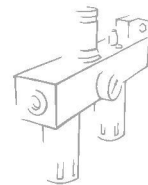


	G 1/4	G 3/8	G 1/2	G 3/4	G 1"
A	42	60	80		
B	156	195	260		
C	42	60	80		
D	42	60	80		
E	32	46	66		
G	10	14	22		
I	107	136	182		
L	M4 hole	M4 hole	M6 hole		
M	176	220	290		

**ORDERING CODES**

Code	Description
1223001	LUB 1/4 N TMV
1323001	LUB 3/8 N TMV
1423001	LUB 1/2 N TMV
1523001	LUB 3/4 N TMV
1623001	LUB 1 N TMV

**NOTES**



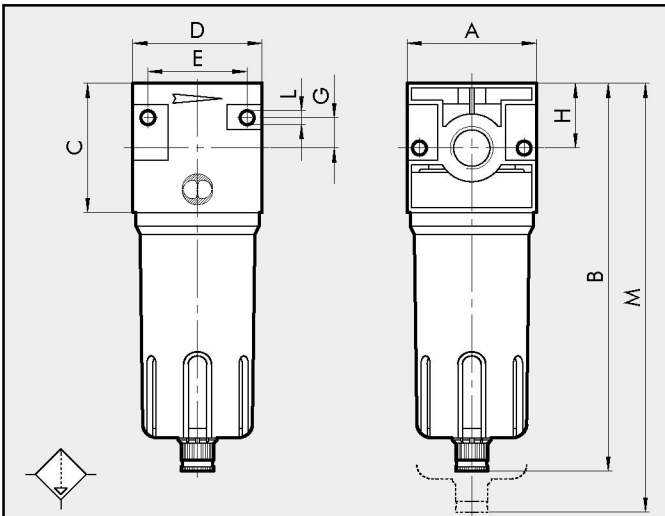
# Newdeal DEPURATOR

- Oil-proof dehydrator with coalescing cartridge
- Metal bowl with external viewing
- Manual/semi-auto or automatic condensate drain



TECHNICAL DATA	DEP ND 3/8"	DEP ND 1/2"
Threaded port	3/8"	1/2"
Degree of deuration	99,97% at 0,01 μm	
Max. inlet pressure	1.8 MPa - 18 bar - 261 psi	
Flow rate at 6.3 bar (0.63 MPa ± 91 psi)	Nl/min	1000
ΔP 0.5 bar (0.05 MPa ± 7 psi)	scfm	36
Flow rate at 6.3 bar (0.63 MPa ± 91 psi)	Nl/min	1600
ΔP 1 bar (0.1 MPa ± 14 psi)	scfm	57
Recommended flow rate at 6 bar	230 Nl/min (8 scfm)	
Fluid	Filtered 4 μm compressed air	
Max temperature at 1 MPa; 10 bar; 145 psi	°C	50°
	°F	122°
Weight	Kg	0.9
Wall fixing screws	M4x55	
Mounting position	Vertical	
Condensate drain	Manual/semi-automatic (RMSA) - Automatic (RA o SAC)	
Bowl capacity	cm <sup>3</sup>	45
Notes:	It is advisable to mount a 4 μ filter upstream the dehydrator acting as a rough filter.	

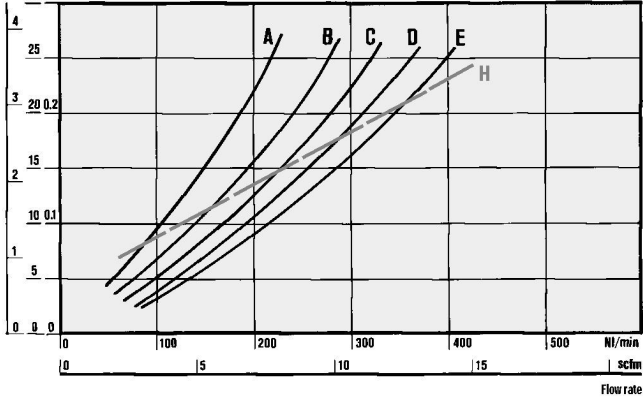
3

DIMENSIONS	G 3/8	G 1/2
		
A		60
B		180
C		60
D		60
E		46
G		14
H		30
L		4M hole
M		230

# FLOW CHARTS

D 3/8 - 1/2

ΔP = (Pm - Pv)  
psi KPa bar  
30 0.3



(H) Maximum flow rate recommended for optimal operation.

## KEY TO CODES

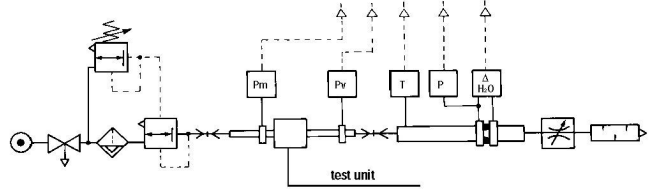
DEP	1/4	RMSA
ELEMENT	THREADED PORT	CONDENSATE DRAIN
DEP	1/4	RMSA
	3/8	RA
	1/2	SAC
	3/4	
	1	

RMSA: Manual/semi-auto drain  
RA: Automatic drain. Float-type operation irrespective of the pressure and flow rate.

## NOTES



**Department of Mechanics**  
Turin Polytechnic



• Flow tests carried out at the Department of Mechanics, Turin Polytechnic, using the computerized test bench following CETOP RP50R recommendations (ISO DIS 6358-2-approved) with ISO 5167 diaphragm gauge.

- |                                |                                 |
|--------------------------------|---------------------------------|
| (A) = 2 bar - 0,2 MPa - 29 psi | (D) = 8 bar - 0,8 MPa - 116 psi |
| (B) = 4 bar - 0,4 MPa - 58 psi | (E) = 10 bar - 1 MPa - 145 psi  |
| (C) = 6 bar - 0,6 MPa - 87 psi |                                 |

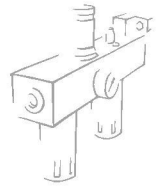
## ORDERING CODES

Code	Description
1322002	D. DEP 3/8 RMSA TMV
1322003	D. DEP 3/8 RA TMV
1322004	D. DEP 3/8 SAC
1422002	D. DEP 1/2 RMSA TMV
1422003	D. DEP 1/2 RA TMV
1422004	D. DEP 1/2 SAC

## NOTES

# Newdeal

## CIRCUIT SHUT-OFF VALVE



Manually-operated circuit shut-off valve.

- Poppet seat system to ensure high flow rate
- Quick-actuation knob
- Possible triple locking
- The valve is actuated by pressing the actuation disk until it clicks. Press the knob downwards to relieve pressure. In this position you can extract the shim and fit a lock to avoid accidental operation.

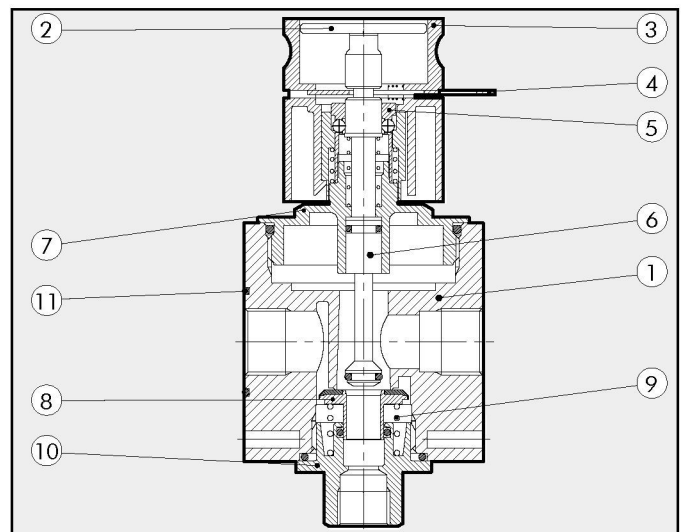


TECHNICAL DATA		V3V ND 1/4"	V3V ND 3/8"-1/2"
Threaded port		1/4"	3/8" - 1/2"
Max. inlet pressure	MPa		1.8
	bar		18
	psi		261
Flow rate at 6.3 bar (0.63 MPa-91 psi)	NI/min	1100	2200
ΔP 0.5 bar (0.05 MPa - 7 psi)	scfm	38.8	78
Flow rate at 6.3 bar (0.63 MPa-91 psi)	NI/min	1500	2900
ΔP 1 bar (0.1 MPa - 14 psi)	scfm	53	103
Flow rate on relieving at 6 bar (0.6 MPa - 87 psi)		1600	2900
with direct relieving into the atmosphere		56.5	103
Fluid		Filtered, lubricated or unlubricated compressed air. Lubrication, if used, must be continuous	
Max temperature at 1 MPa; 10 bar; 145 psi	°C	50	50
	°F	122	122
Weight	Kg	0.35	0.8
Wall fixing screws		M4x40	M4x55
Mounting		In any position	
Type of control		Manual	

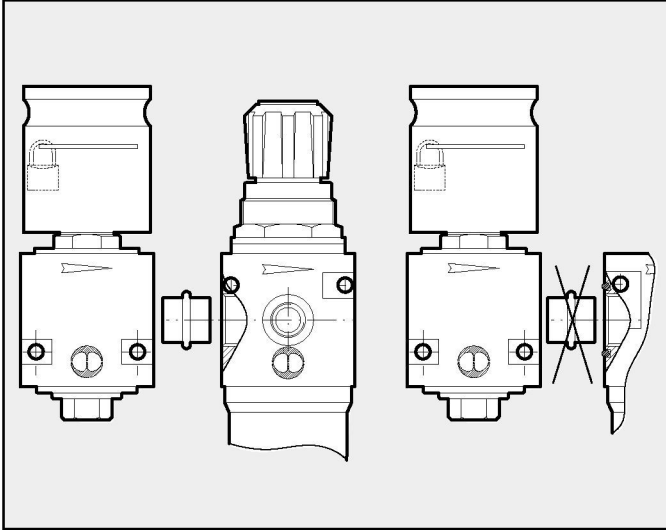
3

### COMPONENTS

- ① Zamak body
- ② Actuation disk
- ③ Technopolymer knob
- ④ Stainless steel safety shim
- ⑤ Clutching unit
- ⑥ OT brass rod
- ⑦ Upper OT 58 brass plug
- ⑧ V3V valve with NBR vulcanized gasket
- ⑨ Stainless steel valve compression spring
- ⑩ Lower OT58 brass plug
- ⑪ NBR gaskets



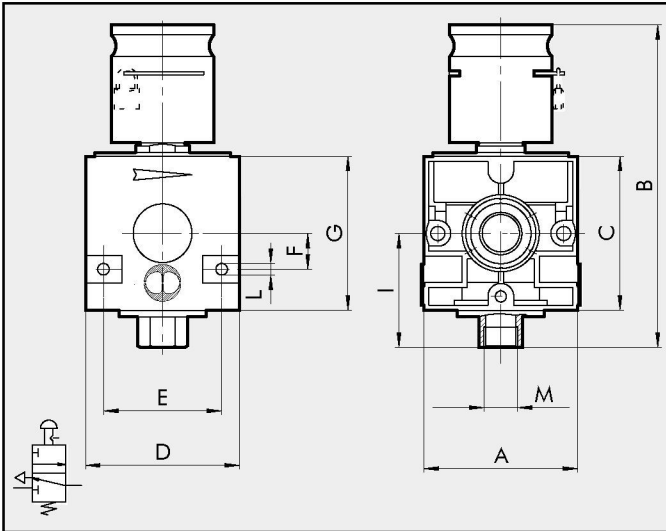
**ASSEMBLY DIAGRAM**



To assemble the V3V to the regulator filter, use the adaptor provided (see the assembly diagram at the left)

Adaptor V3V + FR 1/4" - code 9201001  
 Adaptor V3V + FR 3/8" - code 9401001  
 Adaptor V3V + FR 1/2" - code 9401002

**DIMENSIONS**



	G 1/4	G 3/8	G 1/2
A	42	60	
B	105	126	
C	42	60	
D	42	60	
E	32	46	
F	10	14	
G	42	60	
I	32	43	
L	M4 hole	M4 hole	
M	G 1/8	G 1/4	

**ORDERING CODES**

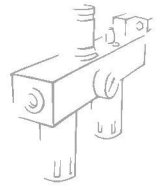
Code	Description
1270001	V3V ND 1/4
1370001	V3V ND 3/8
1470001	V3V ND 1/2

**NOTES**

**NOTES**



# V3V – 3/4" and 1" CIRCUIT CUT-OFF VALVE **Newdeal**



Circuit cut-off valve with three different controls:

- CNOMO electropneumatic
- Manual key-operated
- Manual lever-operated

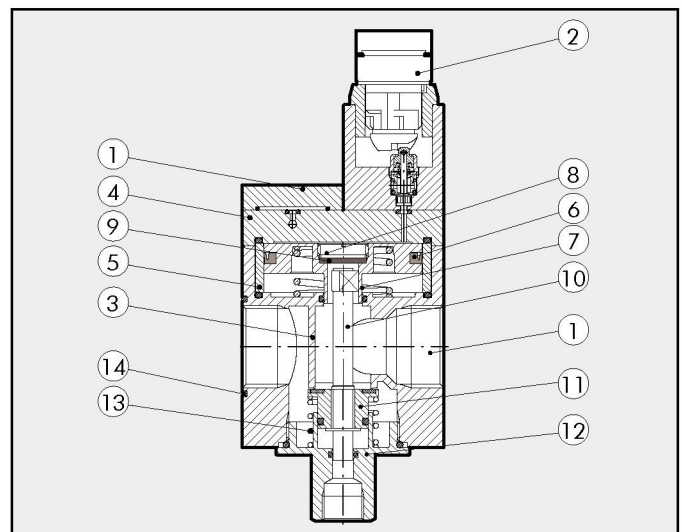


TECHNICAL DATA	V3V ND 3/4"	V3V ND 1"
Threaded port	3/4"	1"
Max. inlet pressure*	MPa	1.3
	bar	13
	psi	188
Flow rate at 6.3 bar (0.63 MPa ÷ 91 psi)	NI/min	7600
ΔP 0.5 bar (0.05 MPa ÷ 7 psi)	scfm	268
Flow rate at 6.3 bar (0.63 MPa ÷ 91 psi)	NI/min	10200
ΔP 1 bar (0.1 MPa ÷ 14 psi)	scfm	360
Flow rate on relief at 6 bar (0.6 MPa; 87 psi)	NI/min	1800
	scfm	64
Fluid	Filtered, lubricated or unlubricated compressed air. Lubrication, if used, must be continuous	
Weight	Kg	2.2
Wall fixing screws	M6x75	
Mounting	In any position	
* VERSION V3V CNOMO (1 MPa - 145 psi)		

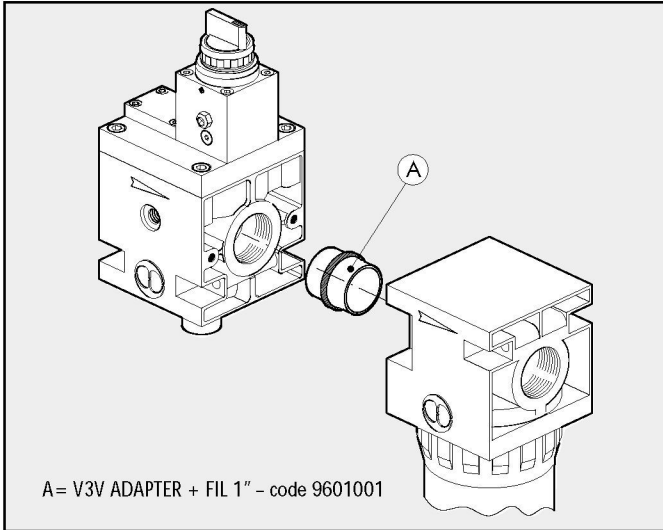
3

## COMPONENTS

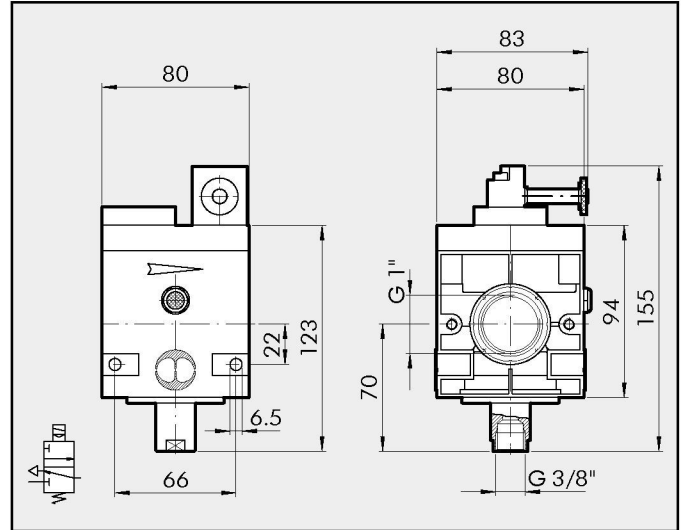
- ① V3V plate
- ② V3V manual sub-assembly control
- ③ V3V aluminium body
- ④ Aluminium top plate
- ⑤ Aluminium spacer
- ⑥ NBR lip seal
- ⑦ Aluminium Ø 63 piston rod
- ⑧ Cap for OT 58 brass plain gasket
- ⑨ NBR plain gasket
- ⑩ OT 58 brass rod
- ⑪ OT 58 brass valve
- ⑫ Aluminium bottom cap
- ⑬ Steel valve spring
- ⑭ NBR gaskets



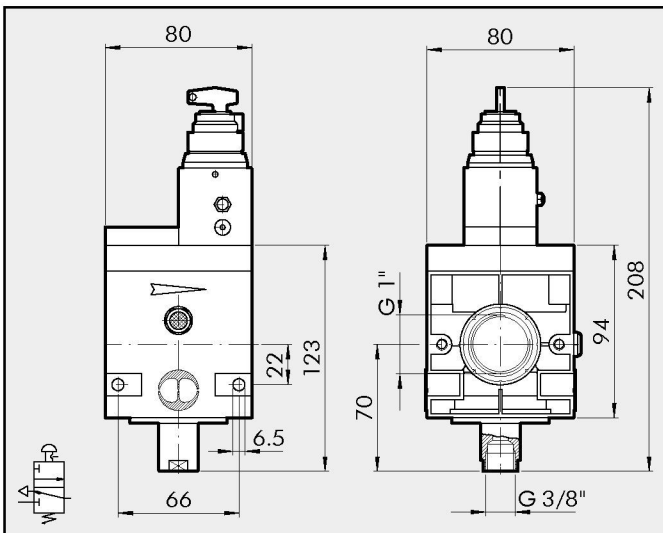
### ASSEMBLY DIAGRAM



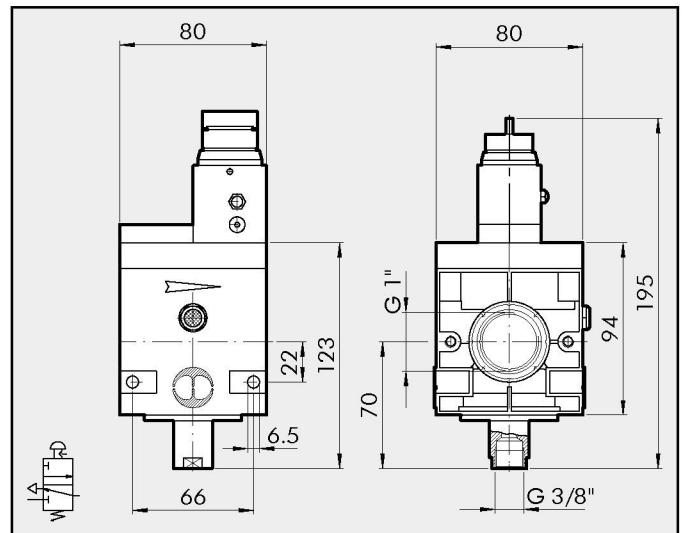
### DIMENSIONS OF V3V 3/4" and 1" ELPN CNOMO



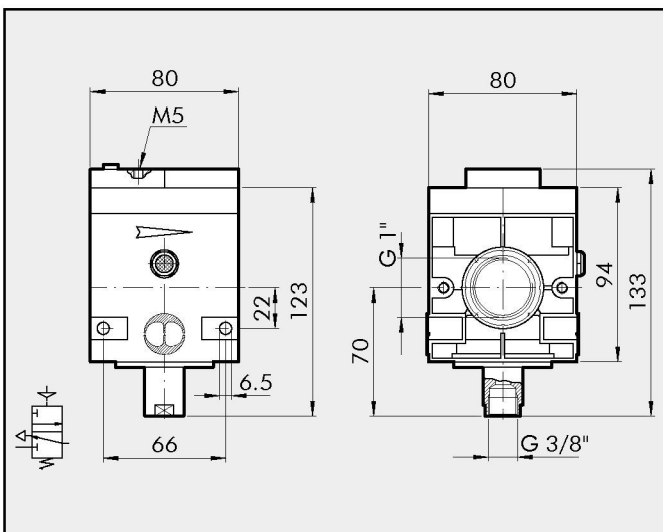
### DIMENSIONS OF V3V 3/4" and 1" KEY-OPERATED CONTROL



### DIMENSIONS OF V3V 3/4" and 1" - MANUAL CONTROL



### DIMENSIONS OF V3V 3/4" and 1" PNEUMATIC

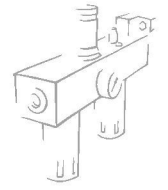


### KEY TO CODES

RV3V	1	ELPN
ELEMENT	THREADED PORT	CONTROL
V3V	1"	V3V
	3/4"	ELPN
		KEY
		MANUAL
		PNEUMATIC

### ORDERING CODES

Code	Description
1575001	V3V 3/4 ELPN CNOMO
1574101	V3V 3/4 KEY
1574001	V3V 3/4 MANUAL
1576001	V3V 3/4 PNEUMATIC
1675001	V3V 1 ELPN CNOMO
1674101	V3V 1 KEY
1674001	V3V 1 MANUAL
1676001	V3V 1 PNEUMATIC



# Newdeal AIR TAKE-OFF

The air take-off has the job to take off the air from the Newdeal FRL unit irrespective of the position where it is assembled.

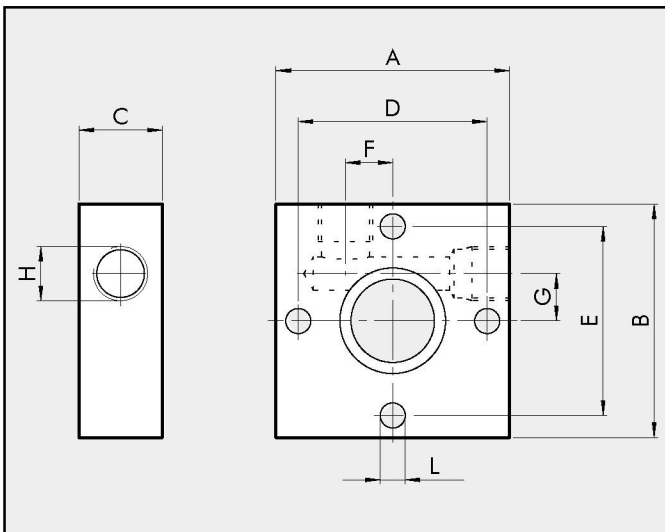
It is required whenever you need to take off air from the FRL unit at different stages of the treatment (normal, filtered, filtered regulated, lubricated, etc.)



TECHNICAL DATA		PA ND 1/4	PA ND 3/8''-1/2''	PA ND 3/4''-1''
Threaded port		G 1/8''	G 1/4''	G 1/2''
Maximum working temperature	°C	50	50	50
at 1 Mpa; 10 bar; 145 psi	°F	122	122	122
Maximum admissible pressure	MPa	1.8	1.8	1.8
	bar	18	18	18
	psi	261	261	261
Weight	[kg]	0.068	0.181	0.413

3

DIMENSIONS		G 1/4	G 3/8-1/2	G 3/4-1''
A		42	60	80
B		42	60	80
C		15	20	30
D		34	49	64
E		34	49	64
F		8.5	14	16
G		8.5	14	16
H (n° 2 pos.)		G 1/8	G 1/4	G 1/2
L		M4 hole	M4 hole	M6 hole



## ORDERING CODES

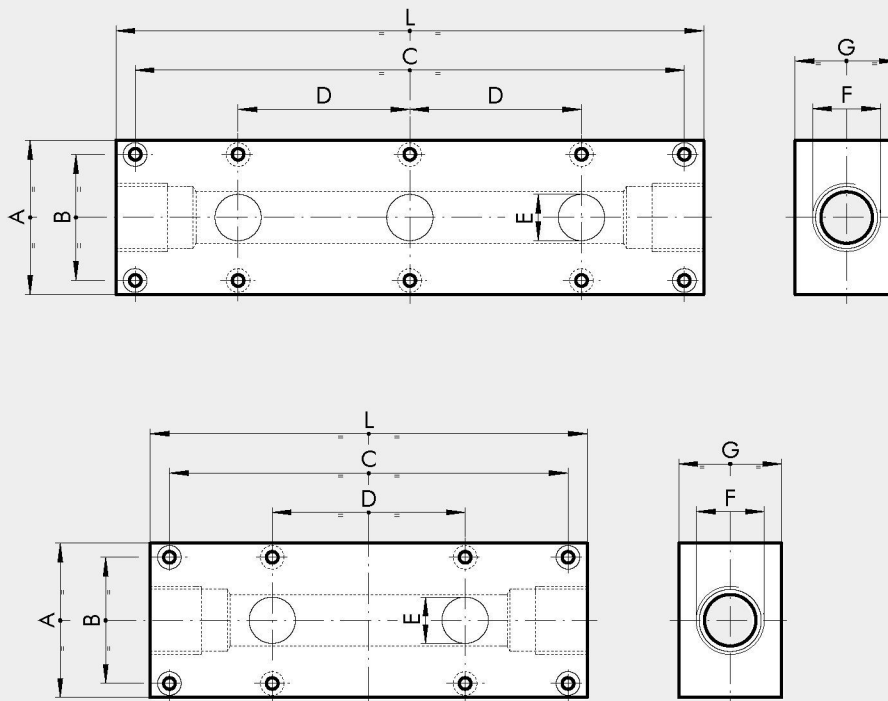
Code	Description
9200401	ACC.PA 1/4 TAKE-OFF
9400401	ACC.PA 1/2 TAKE-OFF
9600401	ACC.PA 3/4 TAKE-OFF

# Newdeal SUB-BASE

With the Newdeal sub-base, more than one regulators can be mounted in parallel using a single pressure supply source.



## DIMENSIONS

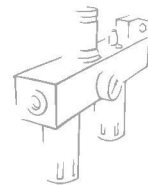


	ND 1/4		ND 3/8-1/2		ND 3/4-1	
	2 positions	3 positions	2 positions	3 positions	2 positions	3 positions
A	50	50	60	60	80	80
B	34	34	49	49	64	64
C	113	165	155	230	190	280
D	52	52	75	75	90	90
E	G 1/4	G 1/4	18	18	31	31
F	G 1/2	G 1/2	G 3/4	G 3/4	G 1" 1/4	G 1" 1/4
G	30	30	40	40	50	50
L	128	180	170	245	210	300
Weight (kg)	0.4	0.6	0.9	1.4	1.5	1.7

## ORDERING CODES

Code	Description
9200201	ACC.SB 1/4 SUB-BASE 2 POS.
9400201	ACC.SB 1/2 SUB-BASE 2 POS.
9600201	ACC.SB 3/4 SUB-BASE 2 POS.
9200301	ACC.SB 1/4 SUB-BASE 3 POS.
9400301	ACC.SB 1/2 SUB-BASE 3 POS.
9600301	ACC.SB 3/4 SUB-BASE 3 POS.

# Newdeal AUTOMATIC CONDENSATE DRAIN



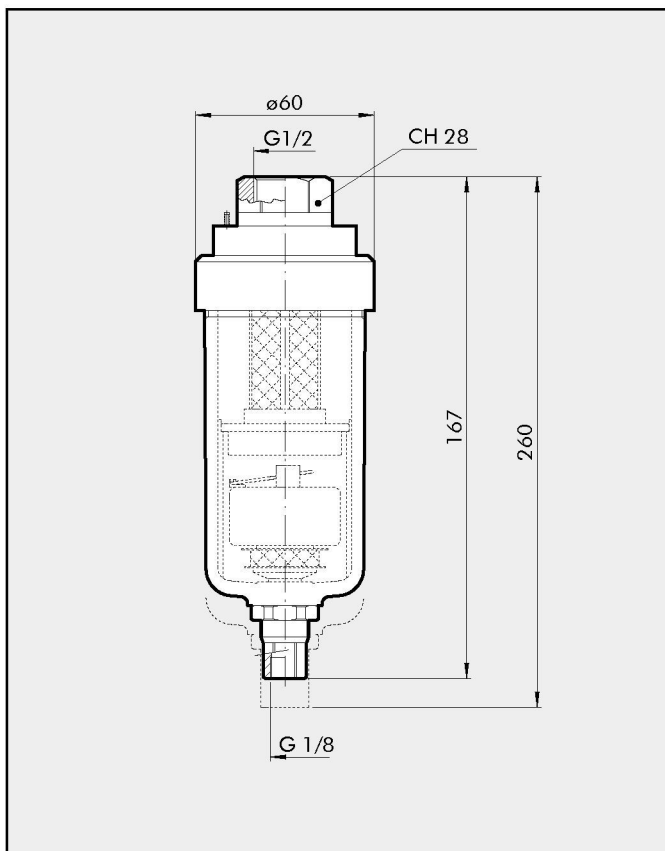
System supply condensate drain:

- All-round condensate level viewing
- Automatic drain from inside the bowl
- Axial coupling



TECHNICAL DATA		SCAL ND 1/2"
Threaded port		G 1/2"
Maximum working temperature	°C	50
at 1 Mpa; 10 bar; 145 psi	°F	122
Maximum admissible pressure	MPa	1.3
	bar	13
	psi	188
Wall fixing screws		M6x75
Weight	[kg]	0.5

## DIMENSIONS



## ORDERING CODES

Code	Description
4589003	ACC. SCARICATORE C.AUT. 1/2 IN LINEA

## NOTES
